

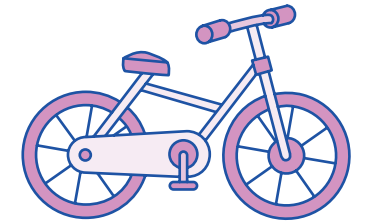
# Year 1 Teacher's Handbook

## Phase Five Term 1 Week 10

### Resource Pack

# Contents

---



Phase Five Term 1 Grapheme cards: <b>ea, oe, au, i-e, a-e, o-e, u-e, e-e, wh, ph</b> .....	1	Yes/No questions for <b>Term 1, Week 10</b> .....	14
Phase Three Grapheme cards: <b>w, ee</b> .....	3	Clues for <b>Term 1, Week 10</b> .....	19
Word cards for <b>e-e</b> .....	4	Phase Two Grapheme card: <b>f</b> .....	24
Word cards for <b>wh</b> .....	7	'Quiz Time' questions for <b>Term 1, Week 10</b> .....	25
Matching pictures for <b>wh</b> .....	10	Tricky word sentence for <b>Term 1, Week 10</b> .....	31
Word cards for <b>ph</b> .....	11	Phase Five Term 1 Tricky word cards .....	32

Phase Five Term 1 Grapheme cards: **ea, oe, au, i-e, a-e, o-e, u-e, e-e, wh, ph**

ea



oe



au



i-e

a-e

o-e

Phase Five Term 1 Grapheme cards: **ea, oe, au, i-e, a-e, o-e, u-e, e-e, wh, ph** continued

u-e

e-e

wh

ph

Phase Three Grapheme cards: **w**, **ee**

w

ee



Word cards for e-e

Pete

Eve

eve

Steve

Word cards for **e-e** continued

these

theme

swede

complete

Word cards for **e-e** continued

athlete

trapeze

extreme

compete



Word cards for **wh**

wheel

which

whisper

while

Word cards for **wh** continued

white

whale

whirl

whiskers

Word cards for **wh** continued

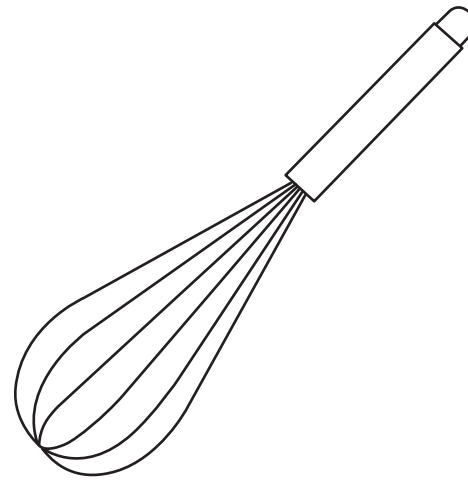
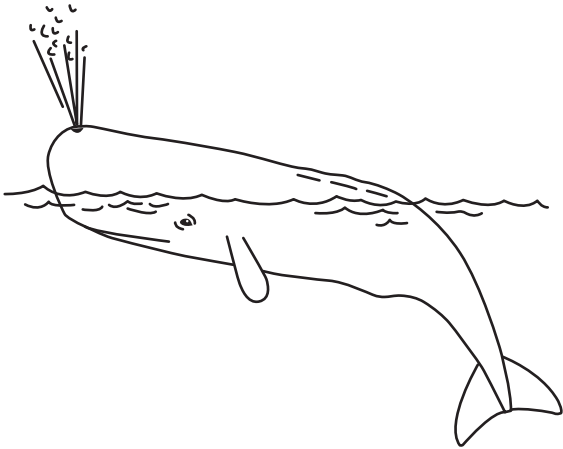
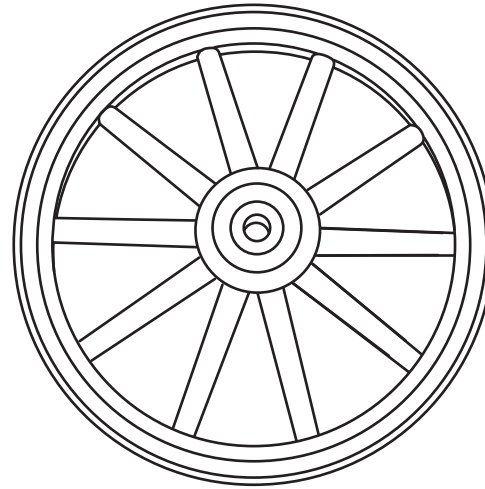
whisk

whack

whizzed

wheat

# Matching pictures for **wh**



Word cards for **ph**

Philip

Steph

phonics

dolphin

Word cards for **ph** continued

alphabet

phew

phone

phantom

Word cards for **ph** continued

elephant

phase

Could you complete  
a jigsaw?



Would you like to visit  
a theme park?

Would you like a go  
on a trapeze?

Would you like to be  
an athlete?

Could you compete  
with a trained athlete?

Which one would your  
bike have?

**Answer:** wheel

Which one could you  
use to mix a cake?

**Answer:** whisk

Which would a cat  
have?

**Answer:** whiskers

Which one could be  
found in the sea?

**Answer:** whale



What means to turn  
round and round?

**Answer:** whirl

Phase Two Grapheme card: **f**



**f**

Which of these do not  
swim in the sea?

a whale

a dolphin

an elephant

a seal

What helps children  
to read?

'Quiz Time' questions for **Term 1, Week 10** continued

wheels

phonics

toes

counters

It starts with the  
letters a, b and c.  
What is it called?

the weather

the alphabet

a phone

a whisper



These are our phonics  
books.

Phase Five Term 1 Tricky word cards

our

here

your

ask

**Note:** The words 'ask' and 'our' may not be tricky in some regional pronunciations.