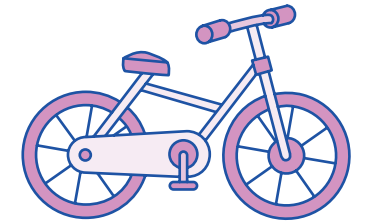


Year 1 Teacher's Handbook

Phase Five Term 2 Week 1

Resource Pack

Contents



Phase Two Grapheme cards: i, o, a	1	Phase Five Term 2 Grapheme cards:	
Word cards for i /igh/ and /i/	2	ay, a-e, ie, i-e, oe, o-e	23
Word cards for o /oa/ and /o/	5	Clues for Term 2, Week 1	25
Word cards for a /ai/ and /a/	8	Phase Three Grapheme cards: ai, igh, oa	29
Matching pictures for a /ai/ and /a/	11	Tricky word sentence for Term 2, Week 1	30
Yes/No questions for Term 2, Week 1	12	Phase Five Term 1 Tricky word cards	31
Read and do sentences for Term 2, Week 1	17	Phase Five Term 2 Tricky word cards	36

Phase Two Grapheme cards: **i, o, a**

i

o

a

Word cards for **i /igh/** and **/i/**

mind

blind

kind

wild

Word cards for **i /igh/** and **/i/** continued

tiger

Friday

spider

pilot

Word cards for **i /igh/** and **/i/** continued

blink

shrink

children

thrilling

Word cards for **o /oa/** and **/o/**

post

most

gold

told

Word cards for **o /oa/** and **/o/** continued

both

don't*

over

hello

*Children were introduced to shortened forms (contractions) and apostrophes in Phase Five Term 1. In Term 2, more shortened forms (such as 'don't') are introduced as they become decodable. There will be more focus on shortened forms at the start of Term 3.

shocked

across

soft

monster

Word cards for **a /ai/** and **/a/**

bacon

acorn

apron

apricot

Word cards for **a /ai/** and **/a/** continued

wafer

paper

grater

later

Word cards for **a /ai/** and **/a/** continued

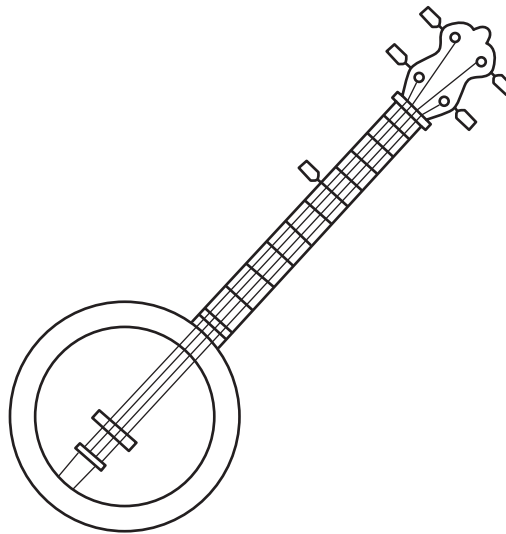
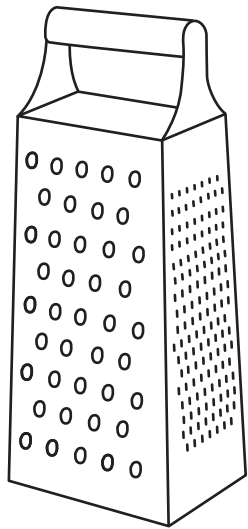
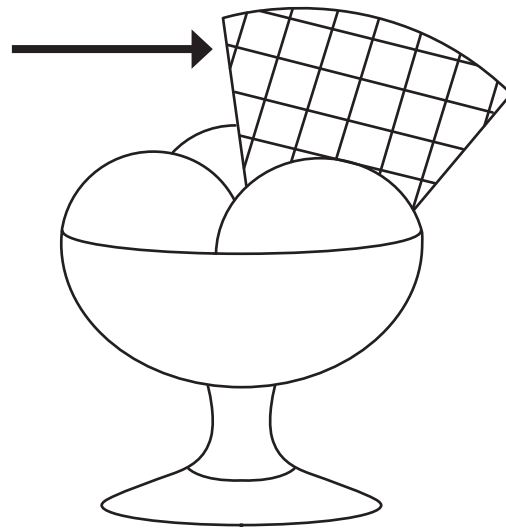
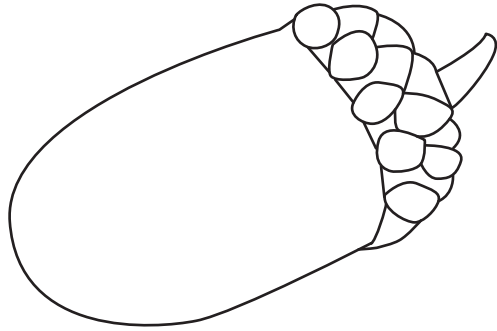
traffic

banjo

dragon

gather

Matching pictures for **a /ai/** and **/a/**



Would you mind
finding a spider in
your sink?

Is there a day called
Friday?

Could you keep a
tiger in your house?

Could you stay silent
all day?

Do you have blinds in
your house?

Hold up both your
hands.

Open your mouth
wide.

Say hello like a
robot would.

Put your hands
over your ears.

Shiver as if it feels
cold in here.

Smile so I can take
your photo.

Phase Five Term 2 Grapheme cards: **ay, a-e, ie, i-e, oe, o-e**

ay



a-e

ie



i-e

Phase Five Term 2 Grapheme cards: **ay**, **a-e**, **ie**, **i-e**, **oe**, **o-e** continued

oe



o-e



Which of these would
you use when cooking?

Answer: grater/apron

Which one could you
draw on?

Answer: paper

Which one could turn
into an oak tree?

Answer: acorn

Which of these would
you eat?

Answer: wafer/bacon/apricot

Phase Three Grapheme cards: **ai**, **igh**, **oa**

ai



igh



oa



Do you want a
drink of water?

Phase Five Term 1 Tricky word cards

love

looked

oh

people

Phase Five Term 1 Tricky word cards continued

their

your

Mr

Mrs

Phase Five Term 1 Tricky word cards continued

ask

asked

call

called

Note: The words 'ask' and 'asked' may not be tricky in some regional pronunciations.

Phase Five Term 1 Tricky word cards continued

could

would

should

our

Note: The word 'our' may not be tricky in some regional pronunciations.

here

mouse

house

Phase Five Term 2 Tricky word cards

water

want