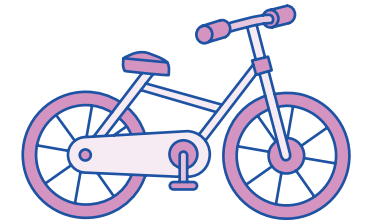


Year 1 Teacher's Handbook

Phase Five Term 2 Week 8

Resource Pack

Contents



Phase Two Grapheme cards: a, g, c	1	'Finish This' sentences for Term 2, Week 8	16
Phase Three Grapheme card: ch	2	Yes/No questions for Term 2, Week 8	20
Phase Five Term 2 Grapheme cards: ou, ve, le, se, ce, ze	3	Sentences and matching picture for Term 2, Week 8	24
Word cards for ve /v/	4	Read and do sentences for Term 2, Week 8	28
Word cards for le /l/ or /ul/	7	Tricky word sentences for Term 2, Week 8	33
Word cards for se and ce /s/	10	Phase Five Term 2 Tricky word cards	35
Word cards for ze and se /z/	13		

Note: Please refer to the relevant Phase Five Resource Pack for a selection of Word cards.

Phase Two Grapheme cards: **a, g, c**

a

g

c

Phase Three Grapheme card: **ch**



Phase Five Term 2 Grapheme cards: **ou, ve, le, se, ce, ze**

ou



ve



le



se



ce



ze



Word cards for **ve /v/**

live

forgive

starve

sleeve

Word cards for **ve /v/** continued

leave

solve

serve

swerve

Word cards for **ve /v/** continued

curve

groove

twelve

massive

Word cards for **le /l/** or **/ul/**

pebble

puddle

bottle

apple

middle

tickle

needle

sparkle

Word cards for **le /l/** or **/ul/** continued

purple

table

candle

simple

Word cards for **se** and **ce /s/**

horse

nurse

crease

purse

Word cards for **se** and **ce /s/** continued

goose

sense

pence

piece

sauce

prince

voice

bounce

Word cards for **ze** and **se /z/**

sneeze

breeze

freeze

squeeze

Word cards for **ze** and **se /z/** continued

snooze

please

tease

cheese

noise

blouse

pause

browse

'Finish This' sentences for **Term 2, Week 8**

My friends live at
number _____.

Answer: twelve

Put your arm through
the _____ of the
sweatshirt.

Answer: sleeve

I thought the secret
agent would _____
the crime.

Answer: solve

There was once a jolly
giant with huge hands
and _____ feet.

Answer: massive

Do you have two
ankles?

Are your eyes purple?

Would a giant fit
through the eye of a
needle?

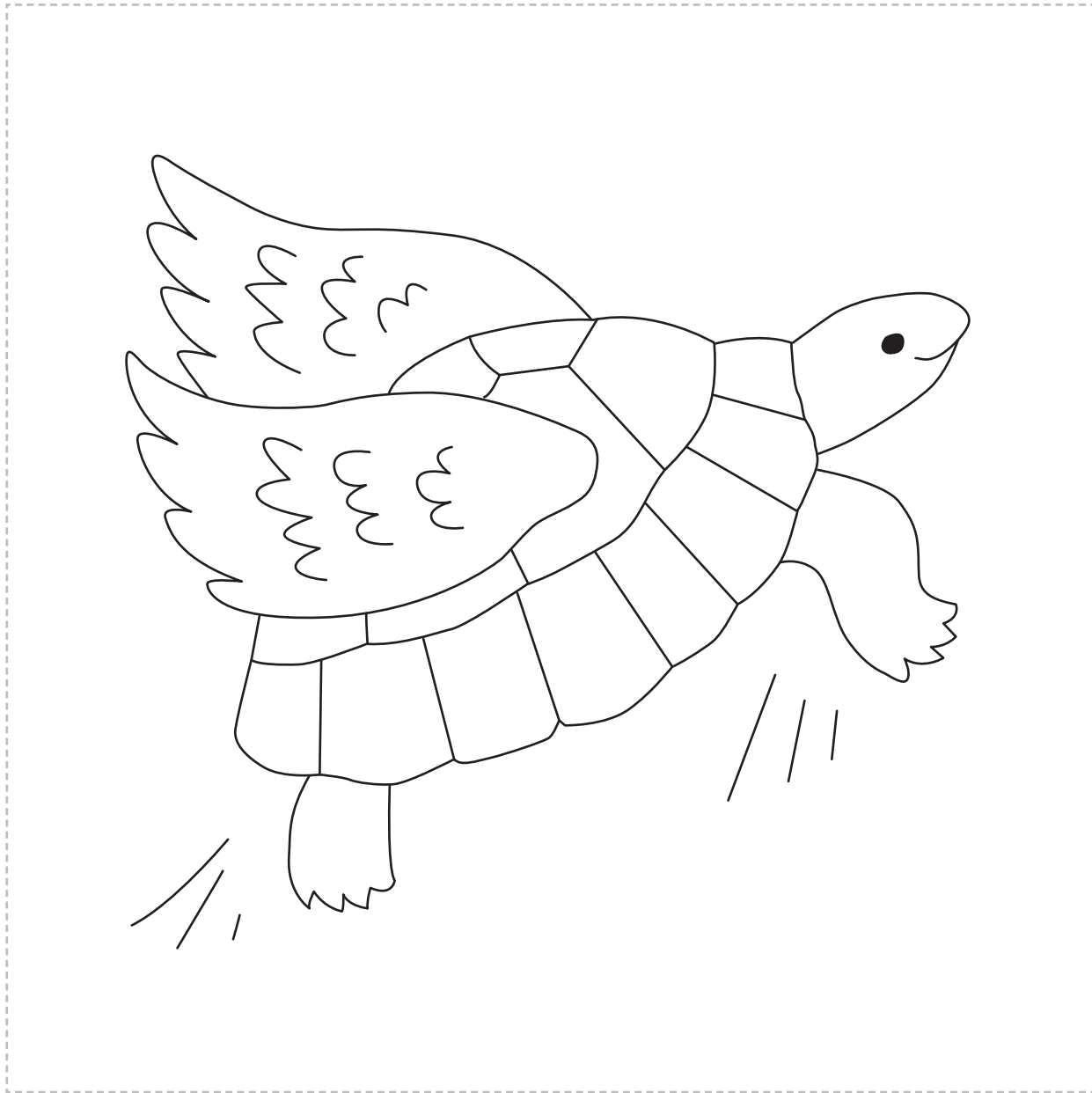
Are there many
different sorts of
apple?

There was once a
mouse with a very
loud voice.

Once there was a
tortoise who thought
he could fly.

The prince had to
force his way through
the forest.

Sentences and matching picture for **Term 2, Week 8** continued



Smile please and say
cheese.

Close your eyes and
have a snooze.

Everyone make a
noise at once.

Stop that noise,
please!

Please pull a funny
face and then freeze.

Why did the horse
start to laugh?

He laughed because
a fly began to tickle
him.

Phase Five Term 2 Tricky word cards

once

eyes

laugh

laughed because