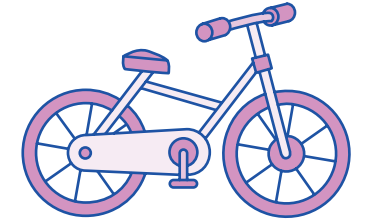


Year 1 Teacher's Handbook

Phase Five Term 3 Week 11

Resource Pack

Contents



Word cards for ti /sh/	1
Word cards for ci, ssi, si /sh/	4
Word cards for su and si /zh/	6
‘Finish This’ sentences for Term 3, Week 11	8
Sentences and matching picture for Term 3, Week 11	12
‘Quiz Time’ questions for Term 3, Week 11	16
Phase Five Term 3 Tricky word cards	22
Yes/No questions for Term 3, Week 11	24

Note: Please refer to the relevant Phase Five Resource Pack for a selection of Word cards and Grapheme cards.

Word cards for **ti /sh/**

portion

lotion

station

caption

Word cards for **ti /sh/** continued

mention

action

addition

fiction

Word cards for **ti /sh/** continued

fraction

section

attention

conversation

Word cards for **ci, ssi, si /sh/**

special

magician

mission

session

discussion

expression

Word cards for **ci, ssi, si /sh/** continued

tension

mansion

extension

Word cards for **su** and **si /zh/**

treasure

pleasure

measure

leisure

usual

casual

Word cards for **su** and **si /zh/** continued

vision

television

division

collision

His parents agreed he
could watch two hours
of _____.

Answer: television

A truck had to move
four cars after the

_____ .

Answer: collision

He looked in the chest
and saw beautiful

_____ .

Answer: treasure

The baby made her
parents smile with

_____ .

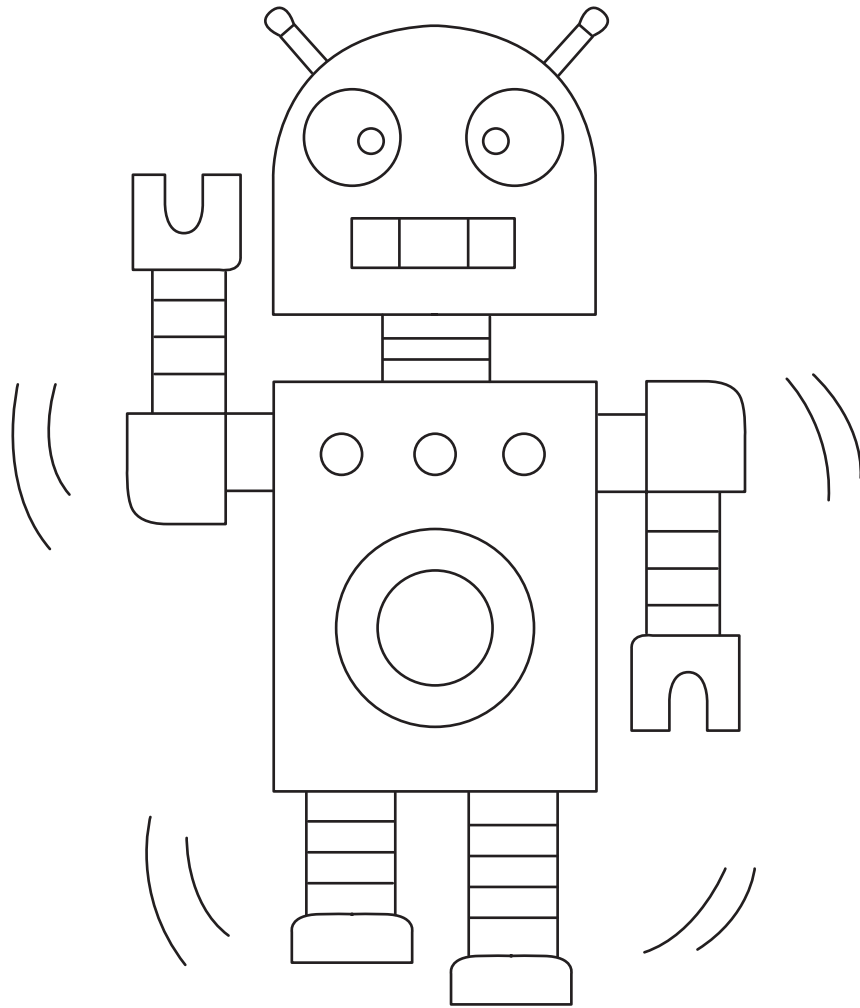
Answer: pleasure

The robot began to make
strange jerky movements.

Everyone looked at the
magic shoes in amazement.

There was great excitement
because the magician was
about to cast a spell.

Sentences and matching picture for **Term 3, Week 11** continued



Which of these means
'strange' or 'different'?

true

usual

clear

untrue

unusual

unclear

Which of these means
'not secure'?

tidy

safe

afraid

untidy

unsafe

unafraid

Which of these means
to undo something?

tie

fasten

wrap

untie

unfasten

unwrap

Phase Five Term 3 Tricky word cards

busy

pretty

beautiful

hour

parent

parents

Phase Five Term 3 Tricky word cards continued

shoe

move

improve

Do tortoises move
slowly?

Is sugar really sweet?

Do friendly people share things?

Can you see clearly on a
really foggy day?

Do you normally use
suntan lotion in winter?

Do shoes usually have
space for thumbs?