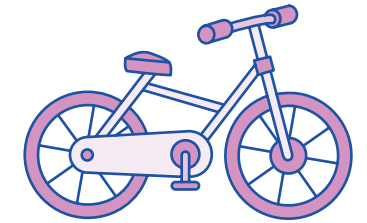


Year 1 Teacher's Handbook

Phase Five Term 3 Week 5

Resource Pack

Contents



Phase Five Term 3 Grapheme cards: ure, are, ea, wh, ph, tch	1	'Is it True?' statements for Term 3, Week 5	16
Word cards for ure /ure/	3	Phase Three Grapheme cards: ear, ch	21
Word cards for are /air/	4	'Finish This' sentences for Term 3, Week 5	22
Word cards for t(ure) /ch/	7	'Quiz Time' questions for Term 3, Week 5	28
Matching pictures for t(ure) /ch/	10	Phoneme spotter sentence for /ar/ for Term 3, Week 5	36
Word cards for a /ar/	11	Clues for Term 3, Week 5	37
Word cards for al /ar/	14	Tricky word sentences for Term 3, Week 5	41
Word cards for al /or/	15	Phase Five Term 1 Tricky word card	43
		Phase Five Term 3 Tricky word cards	44

Note: Please refer to the relevant Phase Five Resource Pack for a selection of Word cards.

Phase Five Term 3 Grapheme cards: **ure, are, ea, wh, ph, tch**

ure



are



ea



wh



Phase Five Term 3 Grapheme cards: **ure**, **are**, **ea**, **wh**, **ph**, **tch** continued

ph



tch



Word cards for **ure /ure/**

pure

cure

secure

manure

Word cards for **are** /air/

square

scare

dare

hare

Word cards for **are /air/** continued

spare

stare

share

glare

Word cards for **are /air/** continued

flare

fare

care

rare

Word cards for **t(ure) /ch/**

picture

creature

mixture

adventure

Word cards for **t(ure) /ch/** continued

vulture

capture

nature

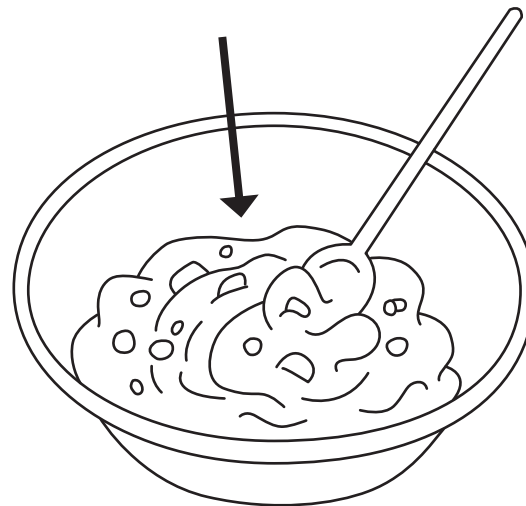
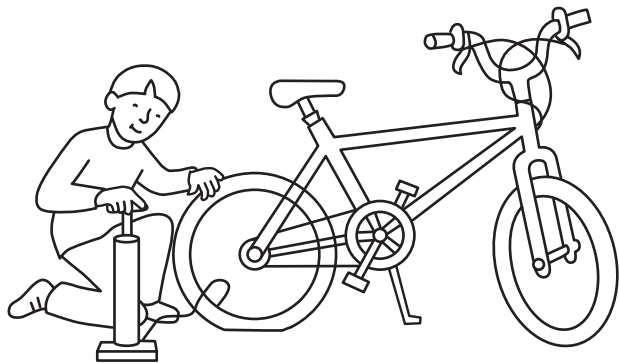
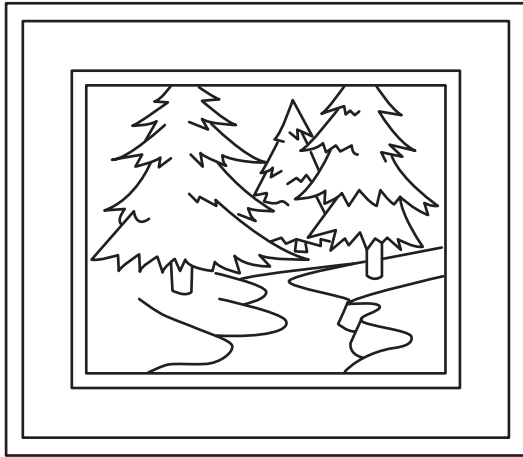
feature

Word cards for **t(ure) /ch/** continued

future

puncture

Matching pictures for **t(ure) /ch/**



Word cards for a /ar/

path

grass

bathroom

plant

Word cards for **a /ar/** continued

afternoon

plaster

dance

glasses

Word cards for **a /ar/** continued

branches

father

vase

tomato

Note: Some children may pronounce some of these words with an /ar/ sound and others with an /a/ sound.
The children should read the word cards according to their regional pronunciation.

Word cards for **al /ar/**

half

calf

palm

calm

balm

almond

Word cards for **al /or/**

chalk

walk

talk

stalk

The water we drink
should be pure.

Vets help to cure our
pets.

A door should be locked
to make it secure.

You would never find
manure in a farmyard.

A seat belt should keep
you safe and secure.

Phase Three Grapheme cards: **ear, ch**

ear



ch



The chef was busy in
the kitchen blending her
cake _____.

Answer: mixture

The children were busy
watching an _____
film.

Answer: adventure

On Thursday, it was
very busy on the
_____ trail.

Answer: nature

Alfie was busy drawing
a pretty _____.

Answer: picture

The group was busy
trying to _____ the
big hairy creature.

Answer: capture

Ella was busy trying to
fix her _____ .

Answer: puncture

Which two of these grow
on a plant?

'Quiz Time' questions for **Term 3, Week 5** continued

money

bananas

feathers

tomatoes

Who could be a member
of your family?

a father

a fairy godmother

a giant

a brother

Where might you learn
to read?

in a bathroom

in a kitchen

in a classroom

in a hallway

Which of these would
you wear on your face?

'Quiz Time' questions for **Term 3, Week 5** continued

a mask

a raft

a branch

a vase

The garden party for
our father starts at
half past two.

One of two parts that
are the same size.

Answer: half

This is the word for a
young cow.

Answer: calf

This is the flat inside
part of your hand.

Answer: palm

This is one of many
sorts of nut.

Answer: almond

What a beautiful day!

Our train will be here
in half an hour.

Phase Five Term 1 Tricky word card

our

Note: The word 'our' may not be tricky in some regional pronunciations.

Phase Five Term 3 Tricky word cards

beautiful

pretty

hour

busy