

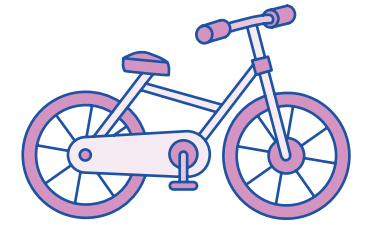
# Year 1 Teacher's Handbook

## Phase Five Term 3 Week 9

### Resource Pack

# Contents

---



Phoneme spotter sentences and matching picture for /ai/ for <b>Term 3, Week 9</b> .....	1	'Finish This' sentences for <b>Term 3, Week 9</b> .....	14
Phase Three Grapheme cards: <b>ai, y</b> .....	6	Word cards for <b>ea /e/</b> .....	18
Phase Five Term 3 Grapheme cards: <b>ay, a-e, augh, our, oar, ey, ea</b> .....	7	Word cards for <b>ey /ee/</b> .....	21
Phase Two Grapheme card: <b>a</b> .....	9	'Quiz Time' questions for <b>Term 3, Week 9</b> .....	24
Word cards for <b>eigh</b> and <b>aigh /ai/</b> .....	10	Tricky word sentences for <b>Term 3, Week 9</b> .....	30
Word cards for <b>ey</b> and <b>ea /ai/</b> .....	12	Phase Five Term 3 Tricky word cards .....	32

**Note:** Please refer to the relevant Phase Five Resource Pack for a selection of Word cards.

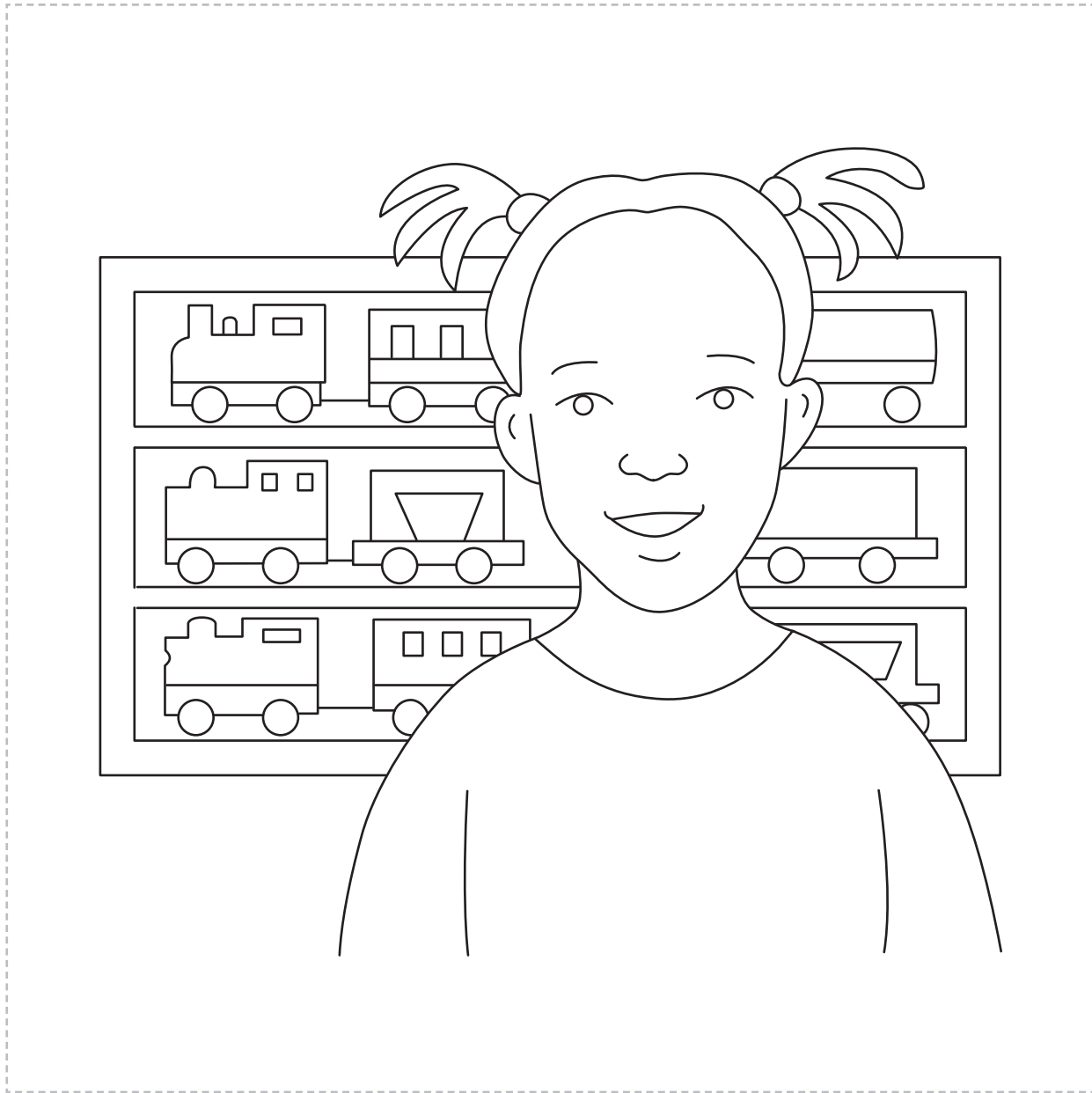
When Jake used spray  
paint, he made a real  
mess on the wallpaper.

The stray dog tried  
again and again to  
escape from the lady.

This display of Amy's  
trains will amaze her  
parents.

The trail will take Jamie  
away from the lake and  
through four caves.

Phoneme spotter sentences and matching picture for /ai/ for **Term 3, Week 9** continued



Phase Three Grapheme cards: **ai**, **y**

ai



y



Phase Five Term 3 Grapheme cards: **ay**, **a-e**, **augh**, **our**, **oar**, **ey**, **ea**

ay



a-e

augh



our



Phase Five Term 3 Grapheme cards: **ay, a-e, augh, our, oar, ey, ea** continued

oar



ey



ea



Phase Two Grapheme card: **a**



a

Word cards for **eigh** and **aigh** /ai/

eight

neigh

sleigh

weigh

Word cards for **eigh** and **aigh /ai/** continued

weight

eighteen

eighty

straight

Word cards for **ey** and **ea /ai/**

grey

they

obey

survey

Word cards for **ey** and **ea /ai/** continued

hey

great

break

steak

Father Christmas flies  
through the night on his  
\_\_\_\_\_ .

**Answer:** sleigh



The weightlifter lifted a  
very heavy \_\_\_\_\_ .

**Answer:** weight

I listened and thought  
I heard the horses

\_\_\_\_\_ .

**Answer:** neigh

Mr Seymour, the  
plumber, said he was  
busy until \_\_\_\_\_ o'clock.

**Answer:** eight

Word cards for **ea /e/**

deaf

spread

dead

threat

Word cards for **ea /e/** continued

wealth

thread

head

health

instead

dreadful

meadow

weather

Word cards for **ey /ee/**

donkey

chimney

honey

money

Word cards for **ey /ee/** continued

monkey

jockey

turkey

trolley



Word cards for **ey /ee/** continued

valley

keypad

volley

hockey

Which of these can be  
grey?

'Quiz Time' questions for **Term 3, Week 9** continued

hair

clouds

elephants

boulders

Which of these should  
you obey?

'Quiz Time' questions for **Term 3, Week 9** continued

rules

laws

parents

horses

Which of these could  
smash and break?

plates

glasses

vases

shoes

Can you move your  
body?



Could we improve our  
school?

Phase Five Term 3 Tricky word cards

move

improve

parent

shoe