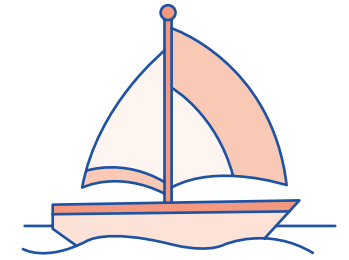


Reception Teacher's Handbook

Phase Three Week 3

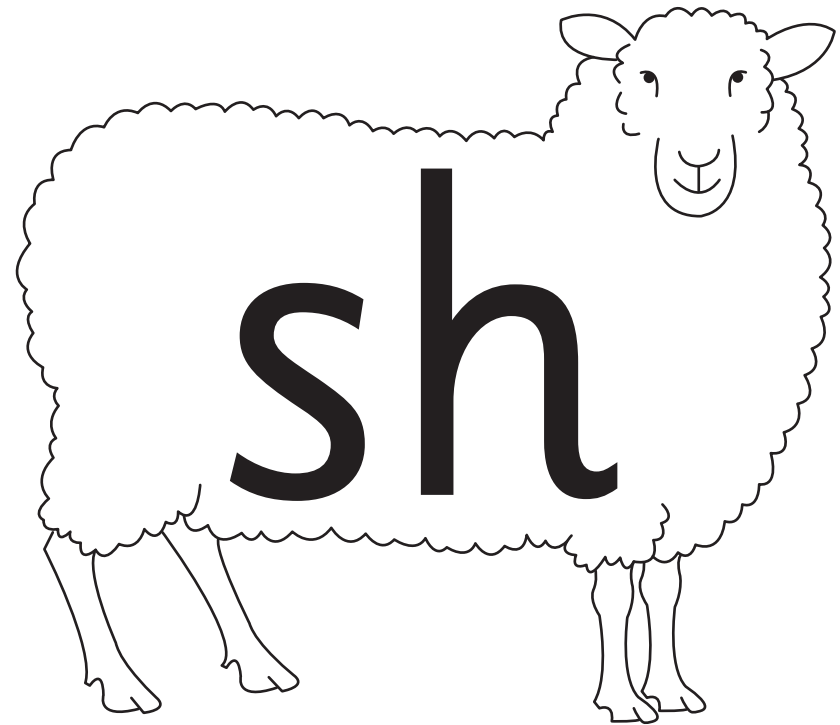
Resource Pack

Contents

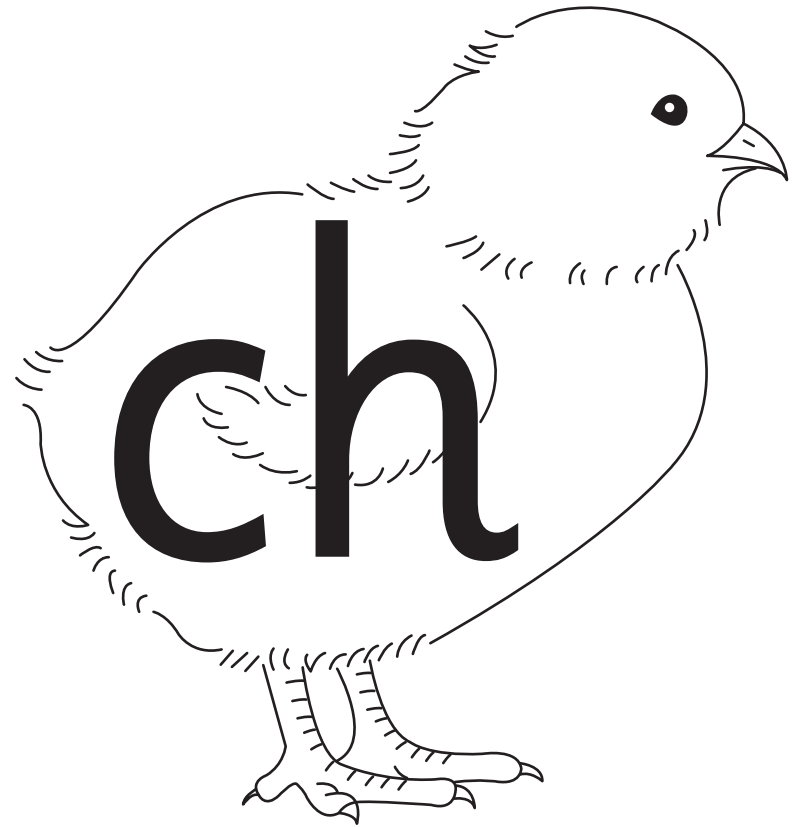
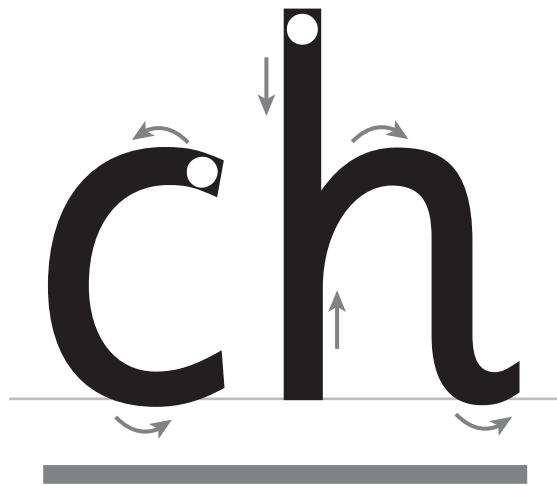


Mnemonic for sh	1	Grapheme cards: j, v, w, x, y, z, qu, sh, ch, th, ng	17
Mnemonic for ch	2	Grapheme cards for Capital letters	20
Mnemonic for th	3	Clues for th	21
Mnemonic for ng	4	Phase Two High-frequency word cards: tricky word cards	25
Word cards for sh	5	High-frequency word cards: tricky word cards	26
Word cards for ch	7	Tricky word sentences for Week 3	29
Word cards for th	9	Two-syllable word cards for sh, ch, th, ng	31
Matching pictures for sh	11		
Captions and matching pictures for sh	13		

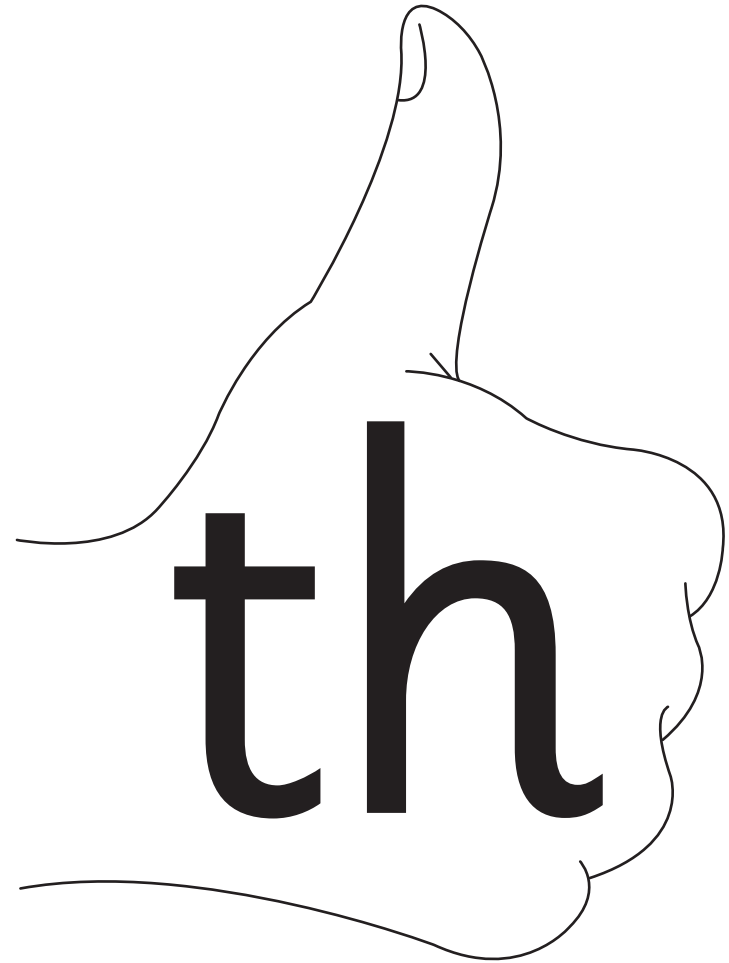
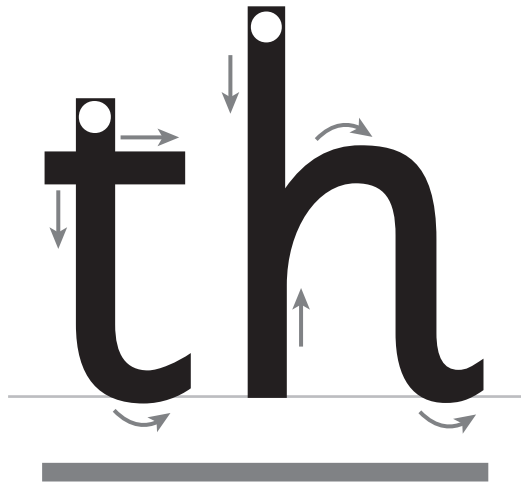
Mnemonic for **sh**



Mnemonic for **ch**



Mnemonic for **th**



Mnemonic for **ng**



Word cards for **sh**

shop
— ● ●

ship
— ● ●

shed
— ● ●

shell

Word cards for **sh** continued

fish

dish

wish

rash

mash

shut

Word cards for **ch**

chop
— ● ●

chat
— ● ●

check
— ● —

chin

Word cards for **ch** continued

chip

chill

rich

chick

Word cards for **th**

thick



thin



moth



thud

Word cards for **th** continued

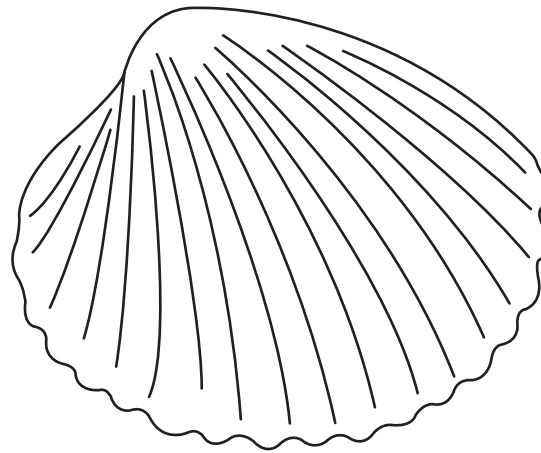
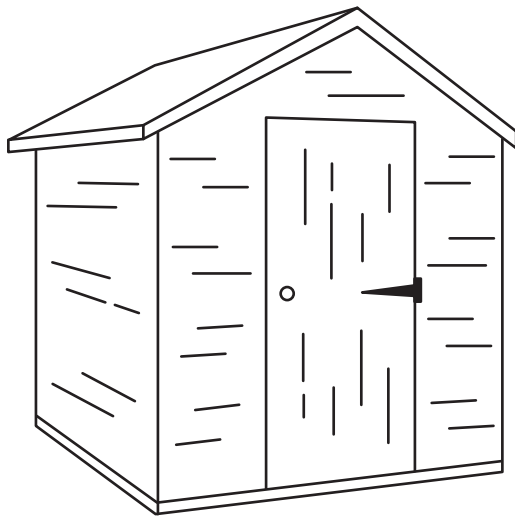
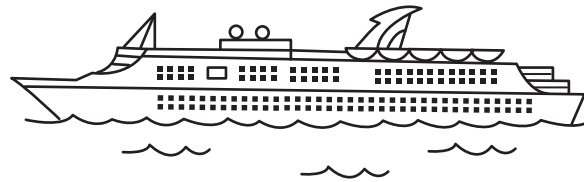
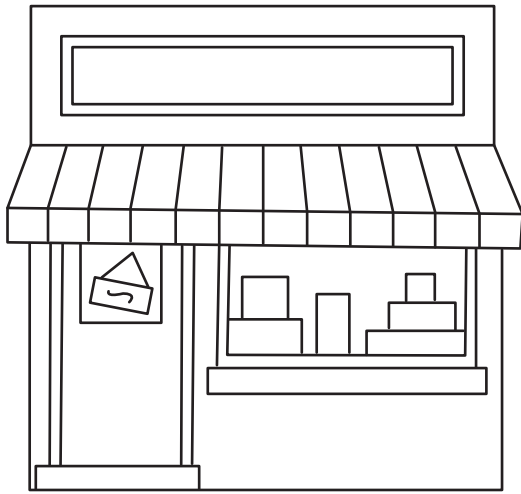
with

this

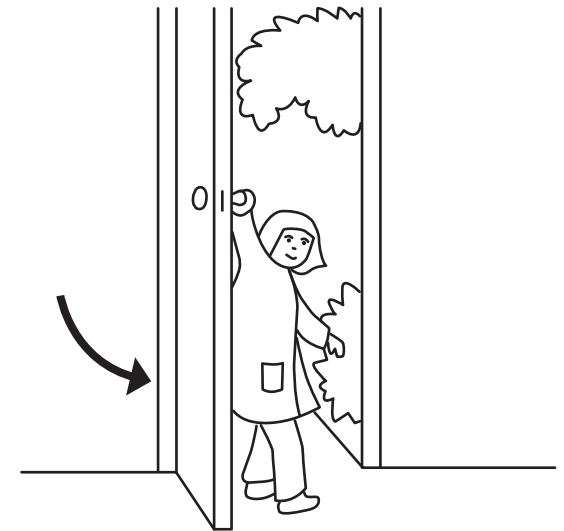
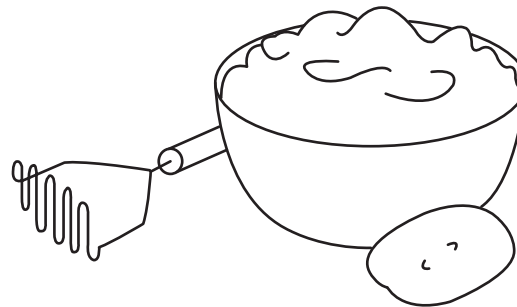
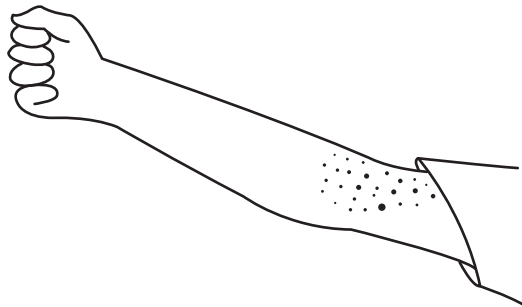
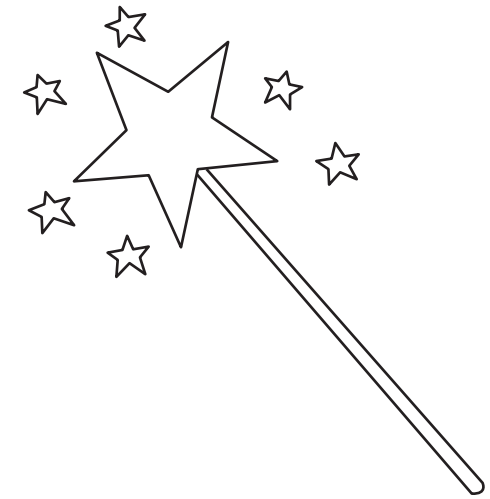
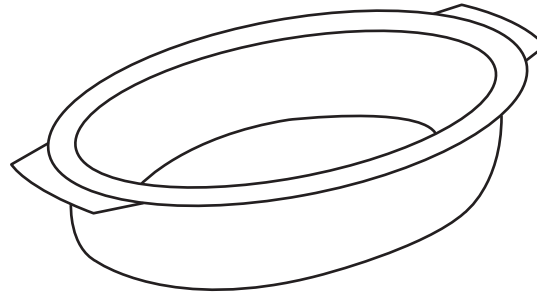
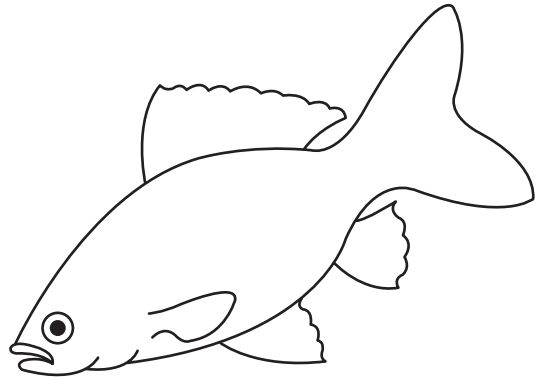
that

them

Matching pictures for **sh**



Matching pictures for **sh** continued



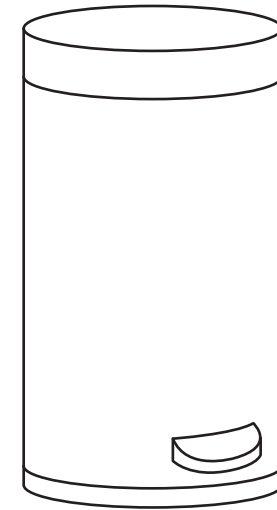
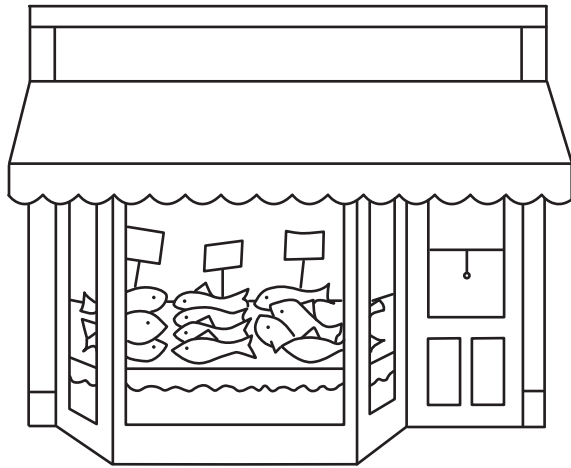
Captions and matching pictures for **sh**

to the fish shop

to the finish

to the rubbish bin

Captions and matching pictures for **sh** continued



Grapheme cards: **j, v, w, x, y, z, qu, sh, ch, th, ng**

j

v

w

x

Grapheme cards: **j, v, w, x, y, z, qu, sh, ch, th, ng** continued

y

z

qu



Grapheme cards: **j, v, w, x, y, z, qu, sh, ch, th, ng** continued

sh

ch

th

ng

Grapheme cards for **Capital letters**

J

Q

Y

Z

Clues for **th**

She can cut and
chop with this.

Answer: knife

He can fill this
at the well.

Answer: bucket/pail

Clues for **th** continued

I run on them.

Answer: legs/feet

Clues for **th** continued

A moth has them.

Answer: wings

Phase Two High-frequency word cards: **tricky word cards**

to

the

no

go

I

into

High-frequency word cards: **tricky word cards**

he

she

we

me

High-frequency word cards: **tricky word cards** continued

be

was

my

you

High-frequency word cards: **tricky word cards** continued

they

her

all

are

We can be quick.

Is he as quick as me?

Two-syllable word cards for **sh, ch, th, ng**

selfish

finish

rubbish

fishing

singing

duckling

ringing

hanging