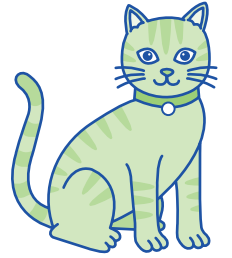


Reception Teacher's Handbook

Phase Two Week 3

Resource Pack

Contents



Grapheme cards for Set 1	1	Word cards for c	13
Grapheme cards for Set 2	2	Matching pictures for c	14
Grapheme cards for Set 3	3	Captions and matching picture for Tog on Og	16
Mnemonic for g	4	Captions and matching picture for Tog and...	20
Mnemonic for o	5	Captions and matching pictures for and	23
Mnemonic for c	6	Phase One Tog posting box	27
Mnemonic for k	7	Two-box phoneme frame	28
Word cards for g	8	Three-box phoneme frame	29
Word cards for o	10	Phoneme frame letters for Sets 1-3	30

Grapheme cards for **Set 1**

s

a

t

p

Grapheme cards for **Set 2**

i

n

m

d

Grapheme cards for **Set 3**

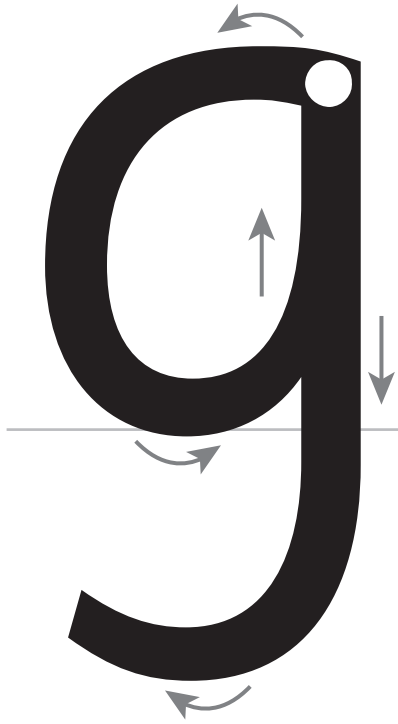
g

o

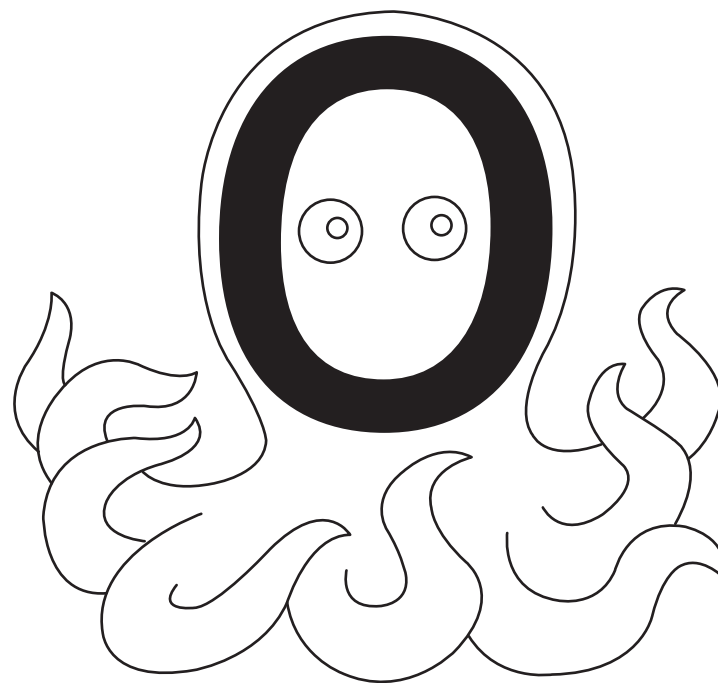
c

k

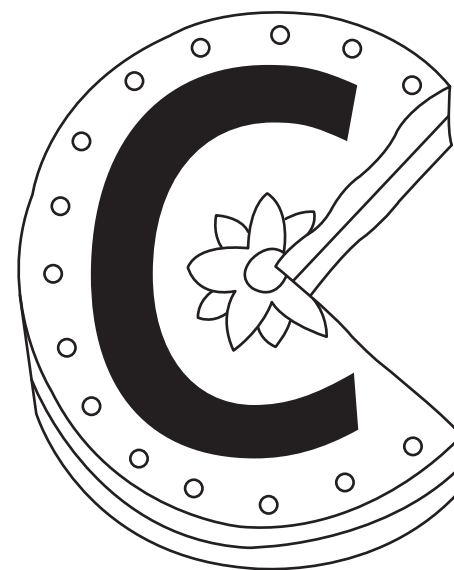
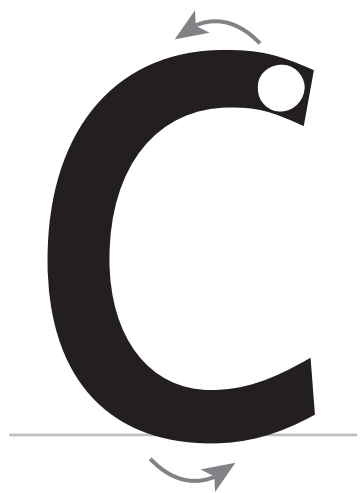
Mnemonic for **g**



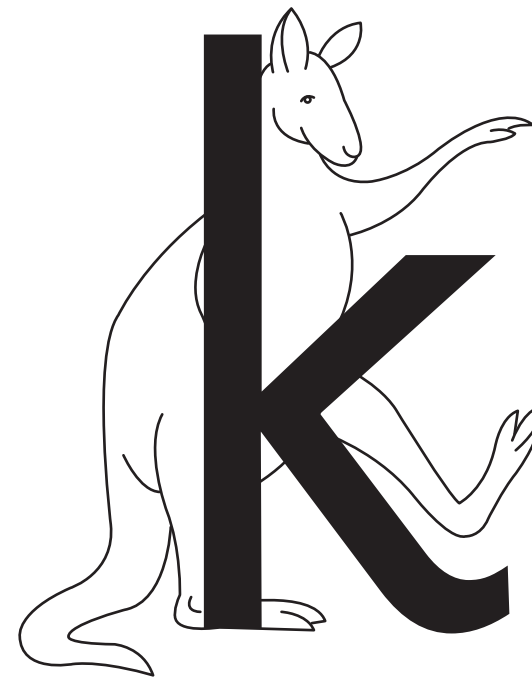
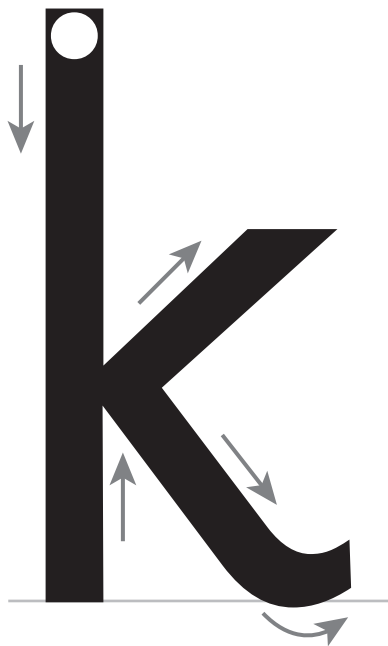
Mnemonic for o



Mnemonic for c



Mnemonic for k



Word cards for **g**

pig



dig



tag



nag



Word cards for **g** continued

gap



gas



sag



Word cards for o

on



not



pot



dot



Word cards for o continued

got



top



pop



mop



Word cards for o continued

nod



dog



Tog



Og



Word cards for c

can



cap



cat



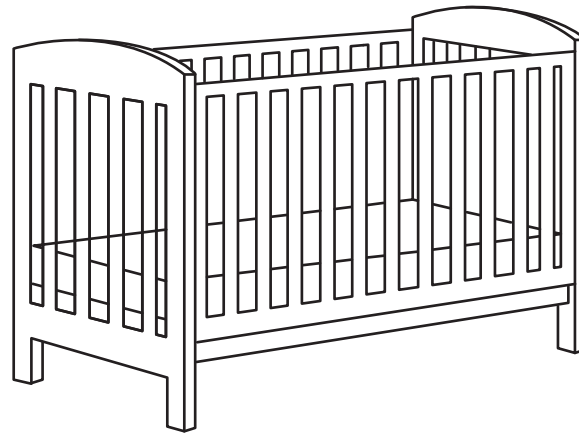
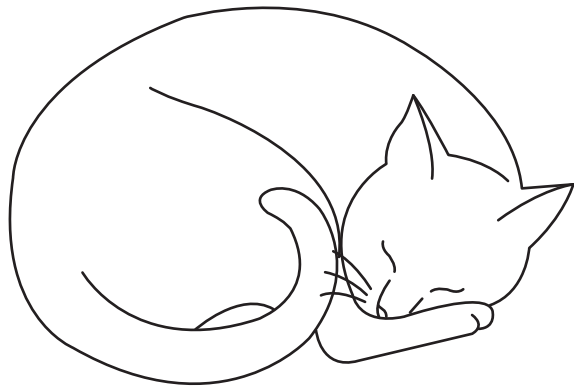
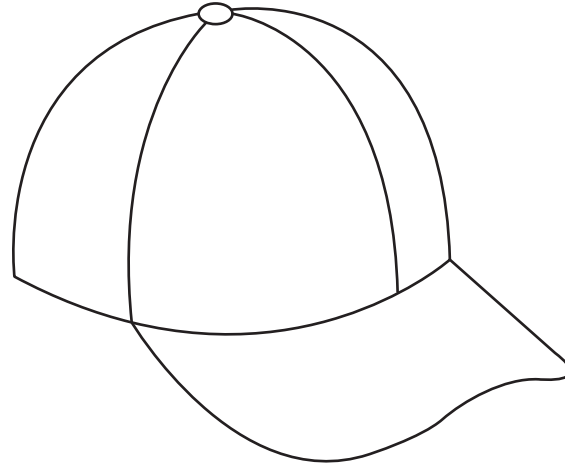
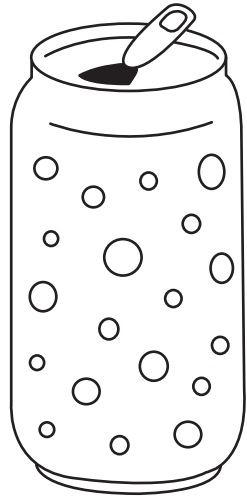
cog



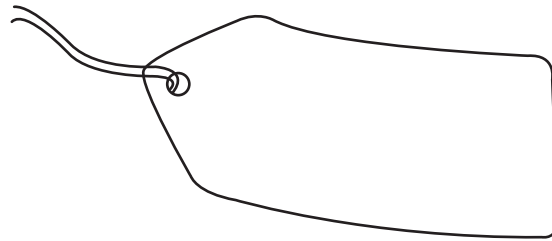
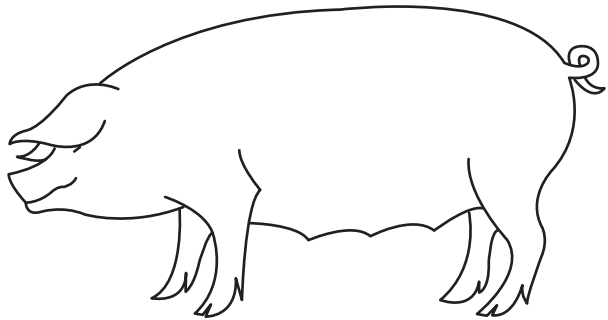
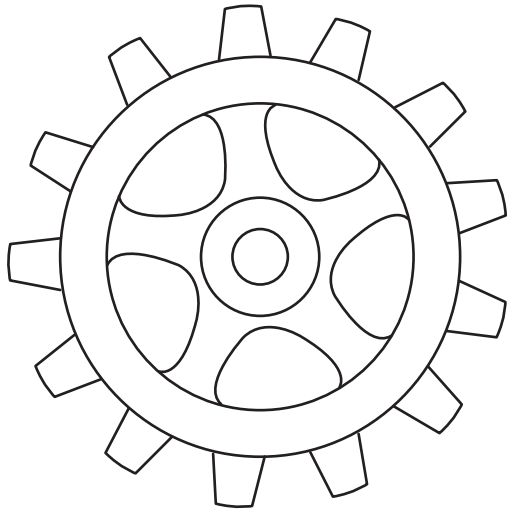
cot



Matching pictures for c



Matching pictures for **c** continued



Captions and matching picture for **Tog on Og**

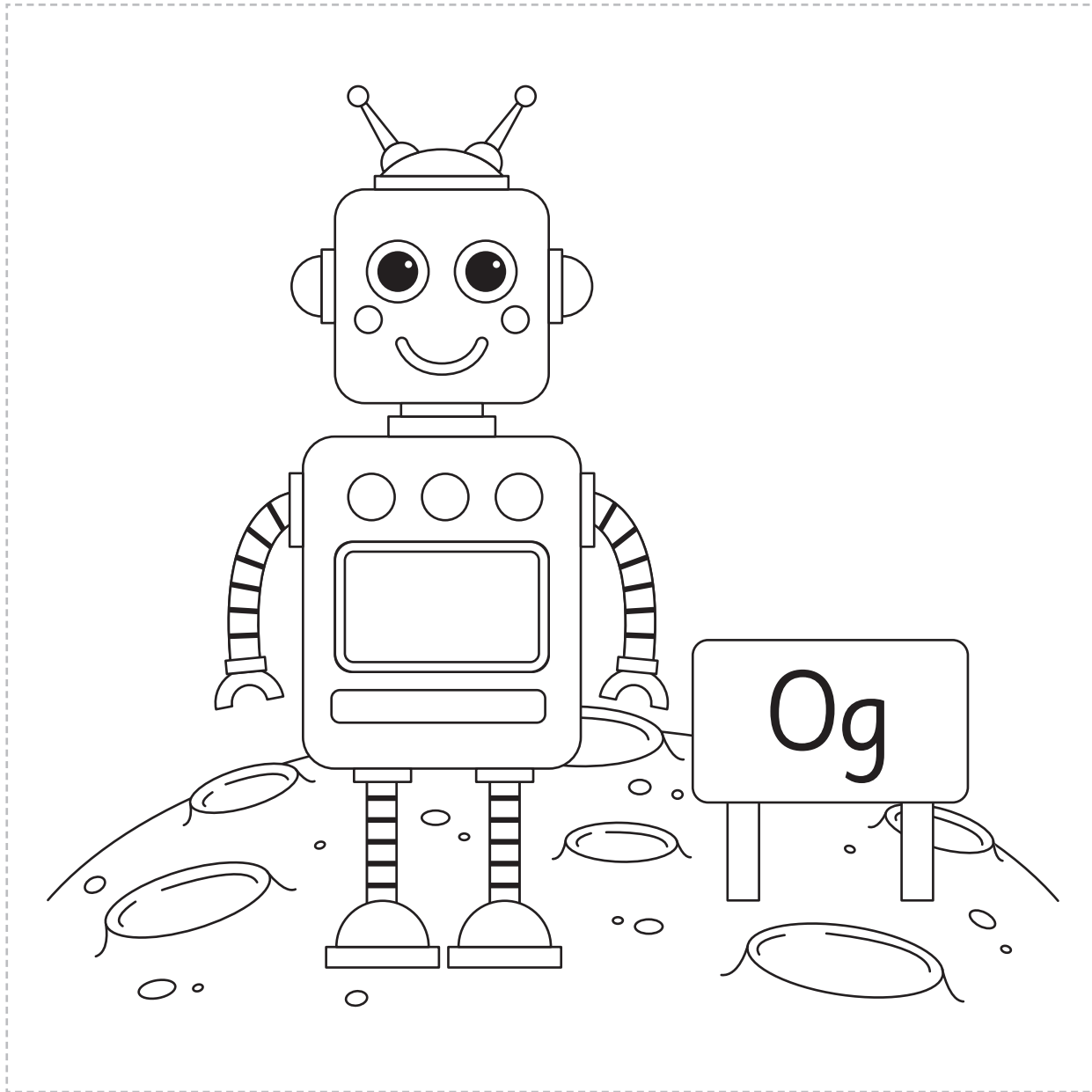
Tog on Og

Captions and matching picture for **Tog on Og** continued

a dog on Og

Tog in a pot

Captions and matching picture for **Tog on Og** continued

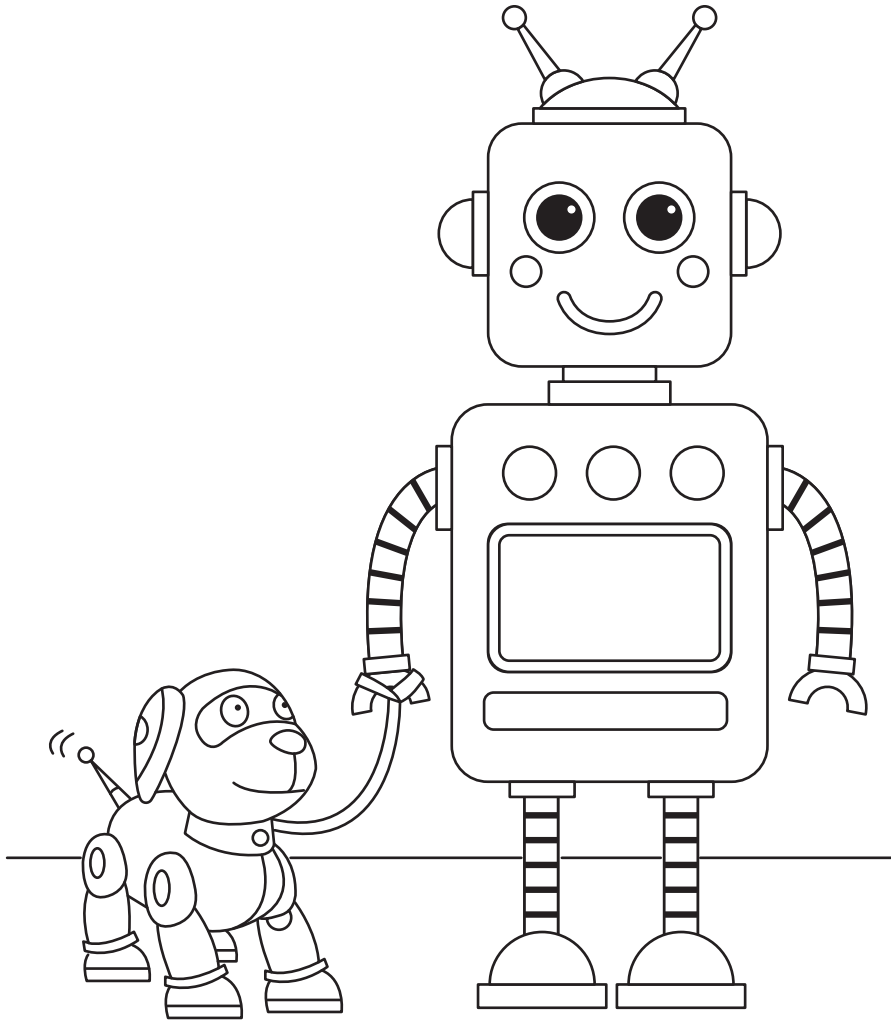


Captions and matching picture for **Tog and...**

Tog and
a dog

Tog and
a man

Captions and matching picture for **Tog and...** continued



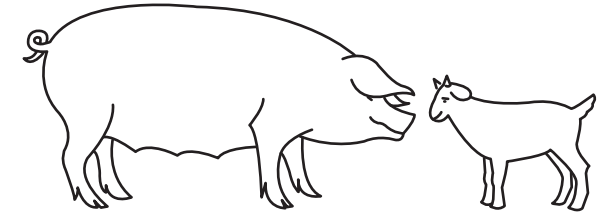
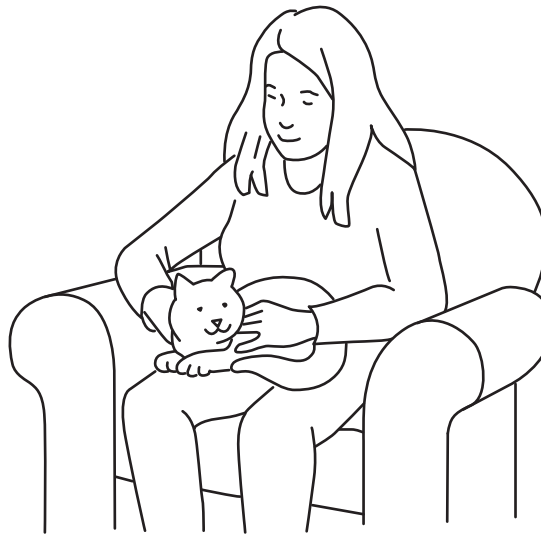
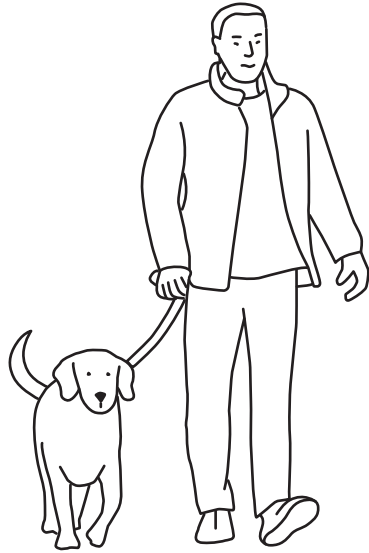
Captions and matching pictures for **and**

a man and
a dog

Kim and a cat

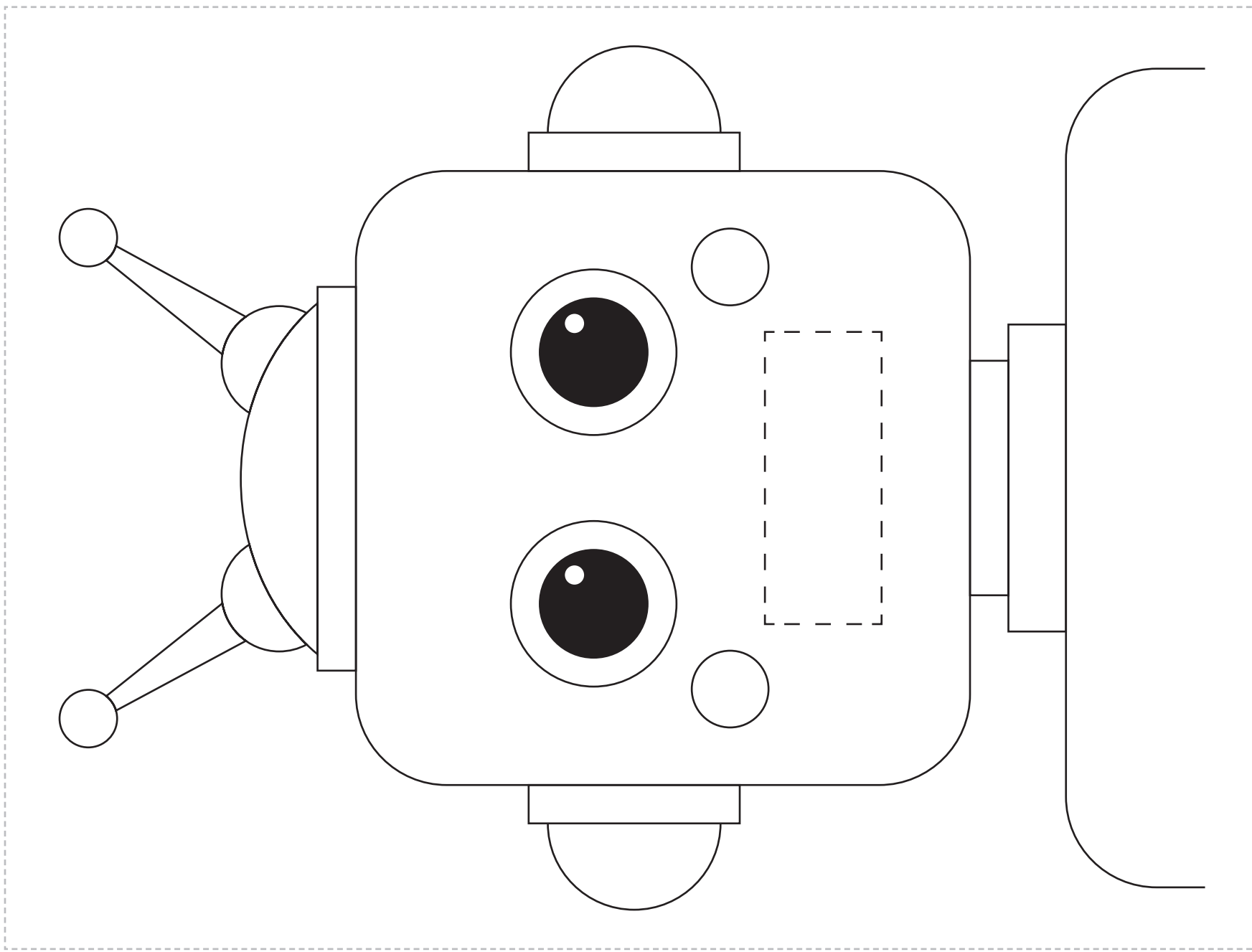
a pig and
a kid

Captions and matching pictures for **and** continued



Phase One Tog posting box

Stick the template onto a cardboard box and cut out the mouth, so the children can 'post' word and grapheme cards through. The **Tog posting box** can also be used in a range of blending and segmenting activities, as described in the lesson plans.

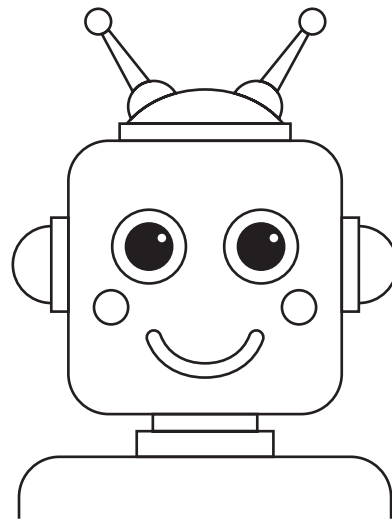


Two-box phoneme frame



Tog speaks in sound-talk.

Break up words into sounds like Tog.

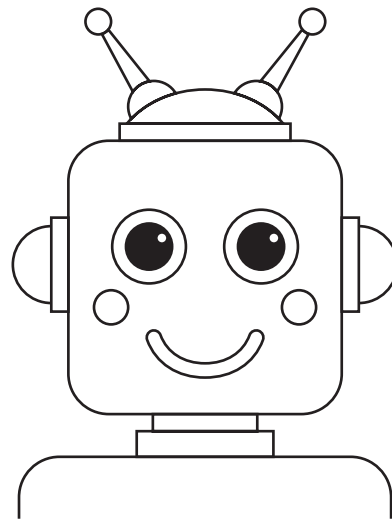


Three-box phoneme frame

--	--	--

Tog speaks in sound-talk.

Break up words into sounds like Tog.



Phoneme frame letters for **Sets 1-3**

Phoneme frame letters for **Set 1**



Phoneme frame letters for **Set 2**



Phoneme frame letters for **Sets 1-3** continued

Phoneme frame letters for **Set 3**

