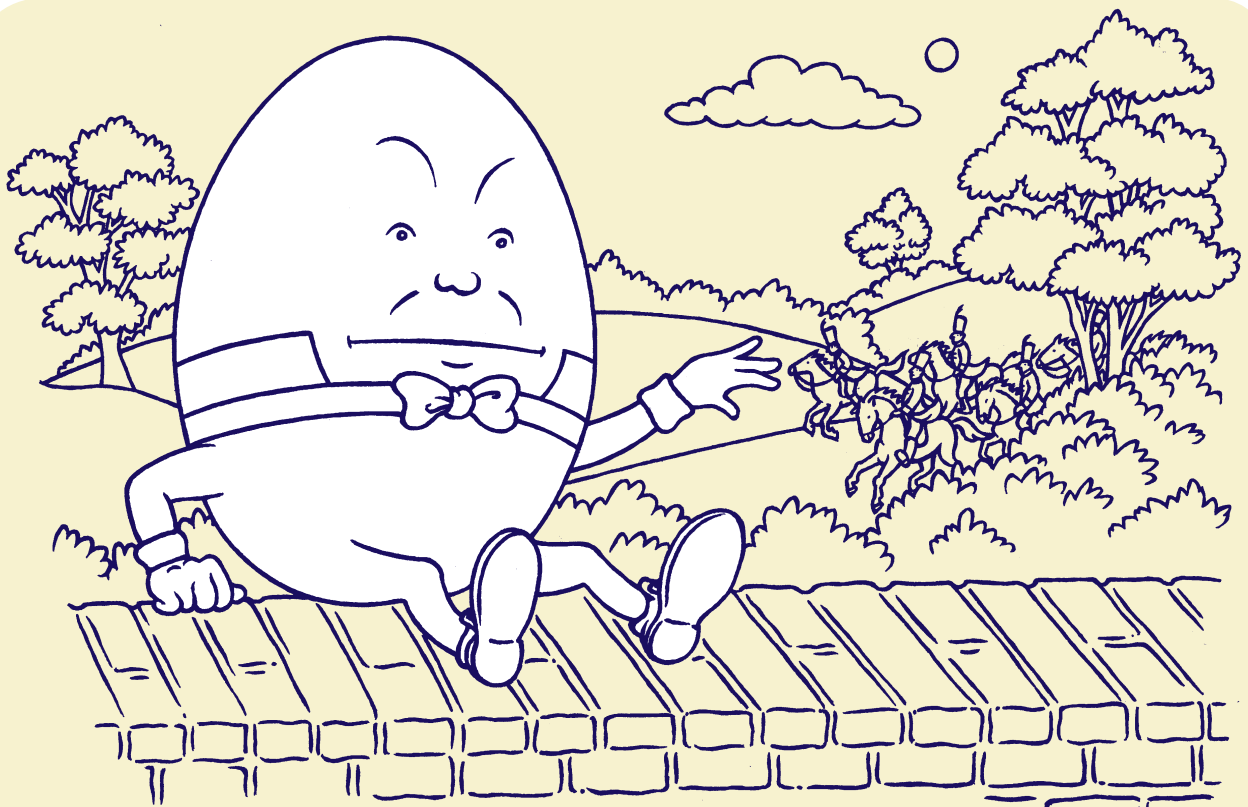


Adding sounds to a rhyme

Say the rhyme 'Humpty Dumpty sat on a wall'. As you read, add to the ends of lines 2, 3 and 4 the sounds suggested below. Use actions to emphasise the sounds.



Humpty Dumpty sat on a wall
Humpty Dumpty had a great fall

crash!

All the King's horses and all the King's men

neigh! atten-tion!

Couldn't put Humpty together again.

boo-hoo!

Repeat the rhyme. Encourage the child to join in with the sounds and actions.