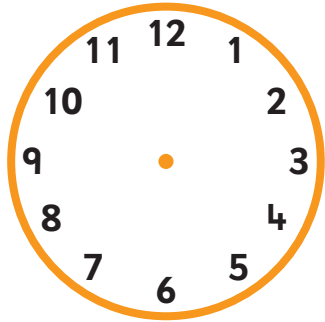


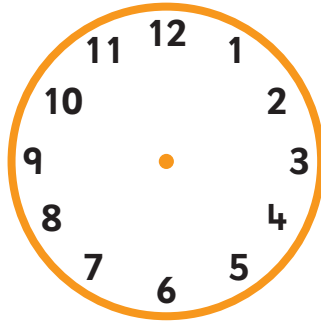
Section 2 Session 3

A

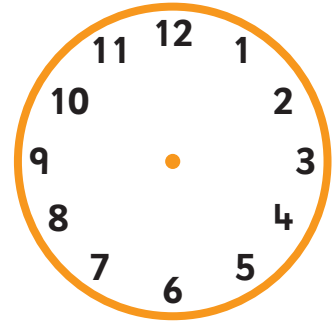
1 Draw the hands to show these times.



6.00

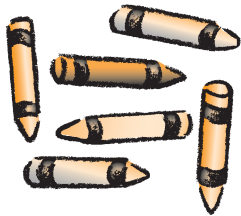


1.30



9.30

2 Write the answers.



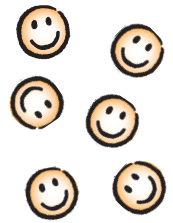
+



$$6 + 7 = \square$$

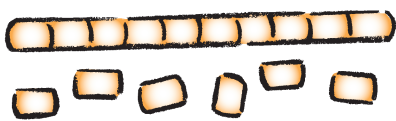


-

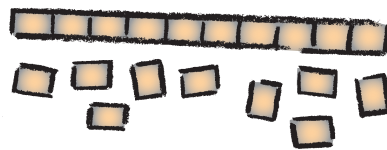


$$9 - 6 = \square$$

3 Write the answers.



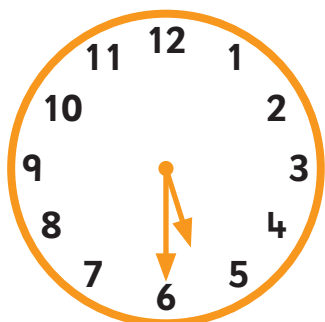
$$- 5 = \square$$



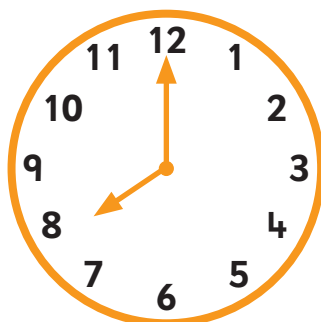
$$- 7 = \square$$

B

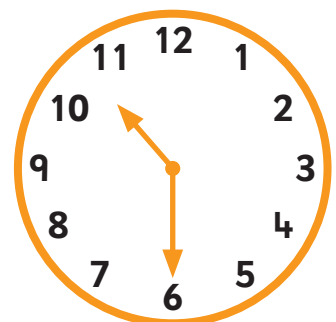
4 Tick the clock that shows the earliest time.



afternoon



morning



evening

5 Write the answers.

8 add 2 equals

10 subtract 4 leaves

The difference between 9 and 5 is

6 Write the answers.

19 subtract 7 is

15 take away 3 leaves

18 minus 6 equals

13 subtract 4 leaves

C

7 Write the answer.

Mum leaves home at 8 o'clock.
She gets to work 1 hour later.

At what time does she get to work? o'clock

8 Write the answer.

Toby has £9. His dad gives him another £3.

How much money does Toby have now? £

9 Write the answer.

There are 15 birds on the roof. 4 birds fly away.

How many birds are left on the roof?

