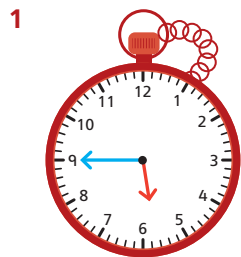


# Answers

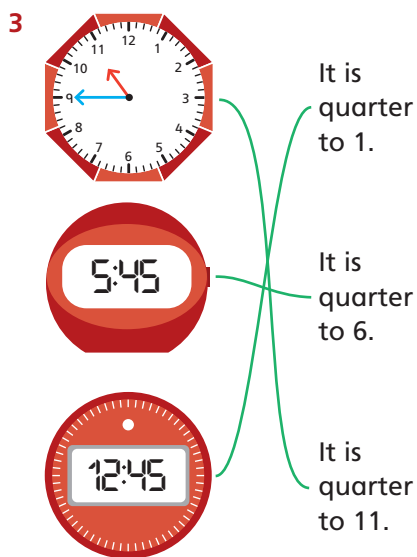
- 2 20 minutes to 5, 20 minutes to 9, 20 minutes to 1/12:40, 20 minutes to 12/11:40



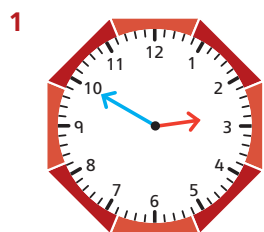
## Pages 34–35



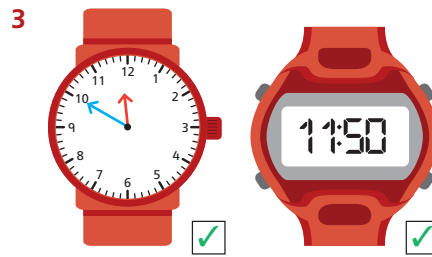
- 2 quarter to 2, 15 minutes to 8, quarter to 1/15 minutes to 1/12:45, quarter to 7/15 minutes to 7/6:45



## Pages 36–37



- 2 10 minutes to 11, 10 minutes to 6, 10 minutes to 1/12:50, 10 minutes to 9/8:50



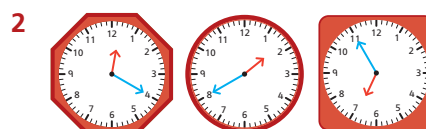
## Pages 38–39



- 2 5 minutes to 7, 5 minutes to 1, 5 minutes to 3/2:55, 5 minutes to 12/11:55
- 3 True, False

## Pages 40–41

- 1 25 minutes past 6/6:25, 20 minutes to 3/40 minutes past 2/2:40, 5 minutes to 9/55 minutes past 8/8:55, 5 minutes past 5/5:05, 25 minutes to 4/35 minutes past 3/3:35, 10 minutes to 8/50 minutes past 7/7:50

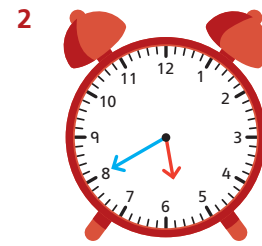


- 4 route correctly drawn through maze to lead to 5 to 10



## Page 42

- 1 9:30, 9:35, 9:40  
20 minutes to 1, quarter to 1/15 minutes to 1, 10 minutes to 1  
4:00, 4:05, 4:10  
7 o'clock, 5 minutes past 7, 10 minutes past 7



## Page 43

- 1 1 hour, 30 minutes, 15 minutes, 45 minutes

## Page 44

- 1 1 minute, 5 minutes, 10 minutes, a quarter of an hour, 30 minutes, 1 hour, 10 hours, 1 day
- 2 Viktor
- 3 Anya, Lexi
- 4 Jordan