

Target time: **12 minutes**

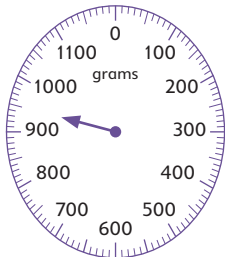
1. Convert these measurements.

a) $3.5\text{kg} = \underline{\hspace{2cm}}\text{g}$

b) $1500\text{g} = \underline{\hspace{2cm}}\text{kg}$

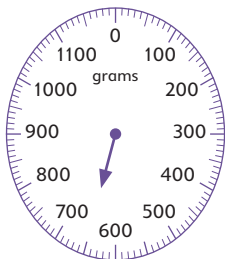
2. Write the mass to the nearest 50g.

a)



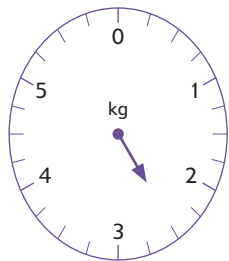
$\underline{\hspace{2cm}}\text{g}$

b)



$\underline{\hspace{2cm}}\text{g}$

3. Write the mass in two ways.



a) $\underline{\hspace{2cm}}\text{g}$

b) $\underline{\hspace{2cm}}\text{kg } \underline{\hspace{2cm}}\text{g}$

4. If a pineapple weighs 60g, how much would 4 pineapples weigh? $\underline{\hspace{2cm}}$

5. Write which coins you would use to make these amounts. Use the fewest coins possible.

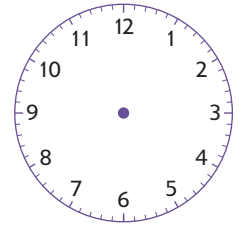
a) 27p $\underline{\hspace{2cm}}$

b) 46p $\underline{\hspace{2cm}}$

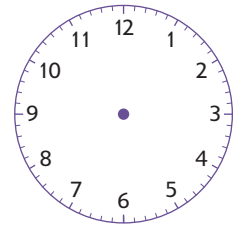
6. Freddie has £2. He spends 80p on a magazine and 25p on sweets. How much change does he get? $\underline{\hspace{2cm}}$

7. Draw the hands on the clocks so they show the correct time.

a) Twenty-two minutes past one



b) Nine minutes past four



8. Robyn went to Sian's house at 3:40 p.m. She stayed for 35 minutes. What time did she leave? $\underline{\hspace{2cm}}$

9. Draw a line that is 42mm long.



10. Draw a line that is 38mm long.



11. Convert these measurements.

a) $\frac{1}{4}\text{l} = \underline{\hspace{2cm}}\text{ml}$

b) $\frac{1}{2}\text{l} = \underline{\hspace{2cm}}\text{ml}$

c) $\frac{1}{10}\text{l} = \underline{\hspace{2cm}}\text{ml}$

d) $300\text{ml} = \underline{\hspace{2cm}}\text{l}$

12. Kailyn had a 330ml can of lemonade. She drank half of it. How much was left? $\underline{\hspace{2cm}}\text{ml}$

Score: $\underline{\hspace{2cm}}$

Time taken: $\underline{\hspace{2cm}}$

Target met? $\underline{\hspace{2cm}}$