

Practise it

Trace and then write the joined letters to complete the words on each line.

wa sh sp nd tch

wo rd rk rm rth

oa r d t d g l l d

oo s n b t f d r m

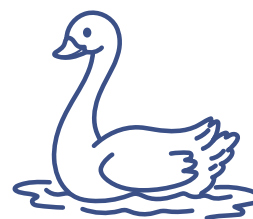
ock s r l fl

Apply it

Write the letters **wa** to complete each tongue-twister. Say the tongue-twisters out loud. Then copy the tongue-twisters.

A **swa**n s___m out to sea.

Swim, s___n, swim!



Two witches ___tch two ___tches.

Which witch ___tches which?