

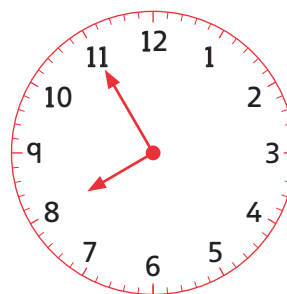
# Test 6: Measurement

- 1 The clock shows 5 minutes to 8 in the morning.

It is 12 minutes slow.

What time should it be?

.....

☐

1 mark

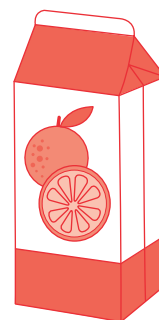
- 2 A carton contains half a litre of juice.

Nirmala pours 235ml of juice into a glass.

How much juice is left in the carton?

Circle **one**.

275ml      735ml       $235\frac{1}{2}$ ml      265ml

☐

1 mark

- 3 5 doughnuts cost the same as 2 cupcakes. 1 cupcake costs £1.75.

How much does 1 doughnut cost?

Show your method.

p

☐

2 marks

- 4 How many hours is 450 minutes?

Tick **one**.

7.5 hours ☐

7 hours 10 minutes ☐

6 hours 50 minutes ☐

☐

1 mark